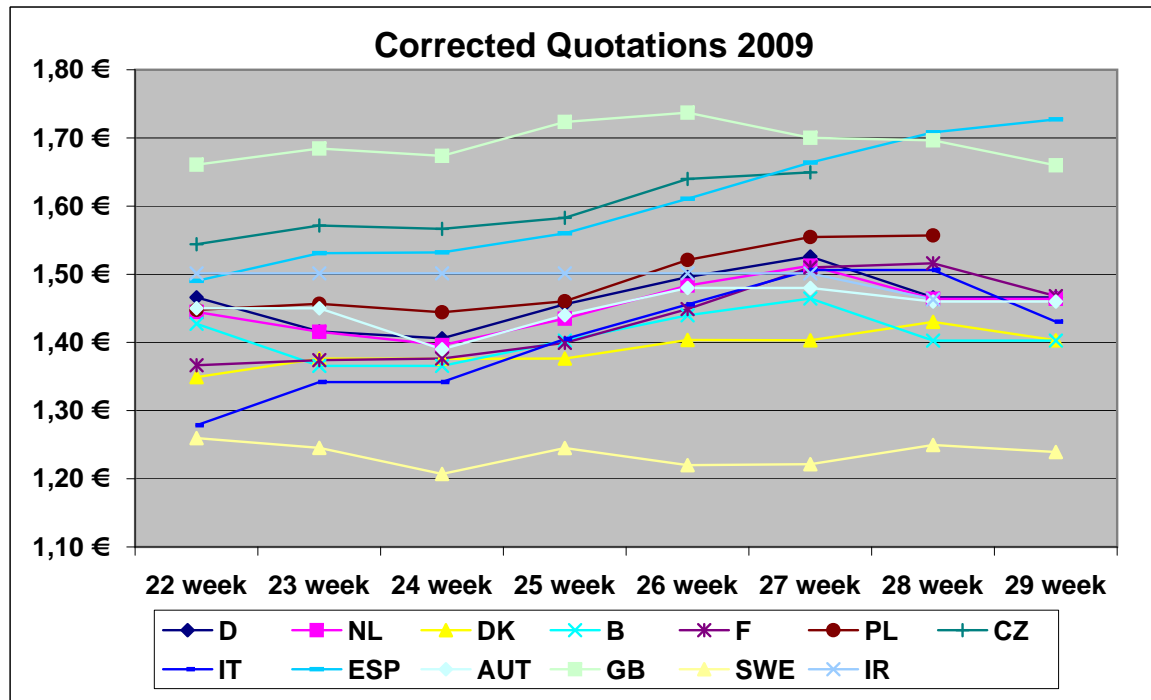




# European Pig-price-comparison by the ISN

corrected quotation <sup>1)</sup>:

Week	D	NL	DK	B	F	PL	CZ	IT	ESP	AUT	GB	SWE	IR
22 week	1,466 €	1,445 €	1,349 €	1,427 €	1,367 €	1,448 €	1,544 €	1,278 €	1,490 €	1,450 €	1,661 €	1,260 €	1,501 €
23 week	1,416 €	1,416 €	1,376 €	1,366 €	1,374 €	1,457 €	1,572 €	1,342 €	1,531 €	1,450 €	1,684 €	1,245 €	1,501 €
24 week	1,406 €	1,396 €	1,376 €	1,366 €	1,377 €	1,444 €	1,567 €	1,342 €	1,532 €	1,390 €	1,674 €	1,207 €	1,501 €
25 week	1,456 €	1,435 €	1,376 €	1,403 €	1,400 €	1,460 €	1,583 €	1,405 €	1,560 €	1,440 €	1,723 €	1,245 €	1,501 €
26 week	1,496 €	1,483 €	1,404 €	1,440 €	1,449 €	1,521 €	1,640 €	1,456 €	1,611 €	1,480 €	1,737 €	1,220 €	1,501 €
27 week	1,526 €	1,512 €	1,403 €	1,464 €	1,510 €	1,555 €	1,650 €	1,506 €	1,664 €	1,480 €	1,700 €	1,221 €	1,501 €
28 week	1,466 €	1,464 €	1,430 €	1,403 €	1,516 €	1,557 €		1,506 €	1,708 €	1,460 €	1,696 €	1,250 €	1,463 €
29 week	1,466 €	1,464 €	1,403 €	1,403 €	1,468 €			1,430 €	1,727 €	1,460 €	1,660 €	1,239 €	



Explanation

(Source: ISN - Interessengemeinschaft der Schweinehalter Deutschlands)

1) corrected quotation: The official Quotations of the different countries are corrected, so that each quotation has the same base (conditions).

base: 56 % lean-meat-percentage; farm-gate-price; 79 % killing-out-percentage, without value-added-tax